

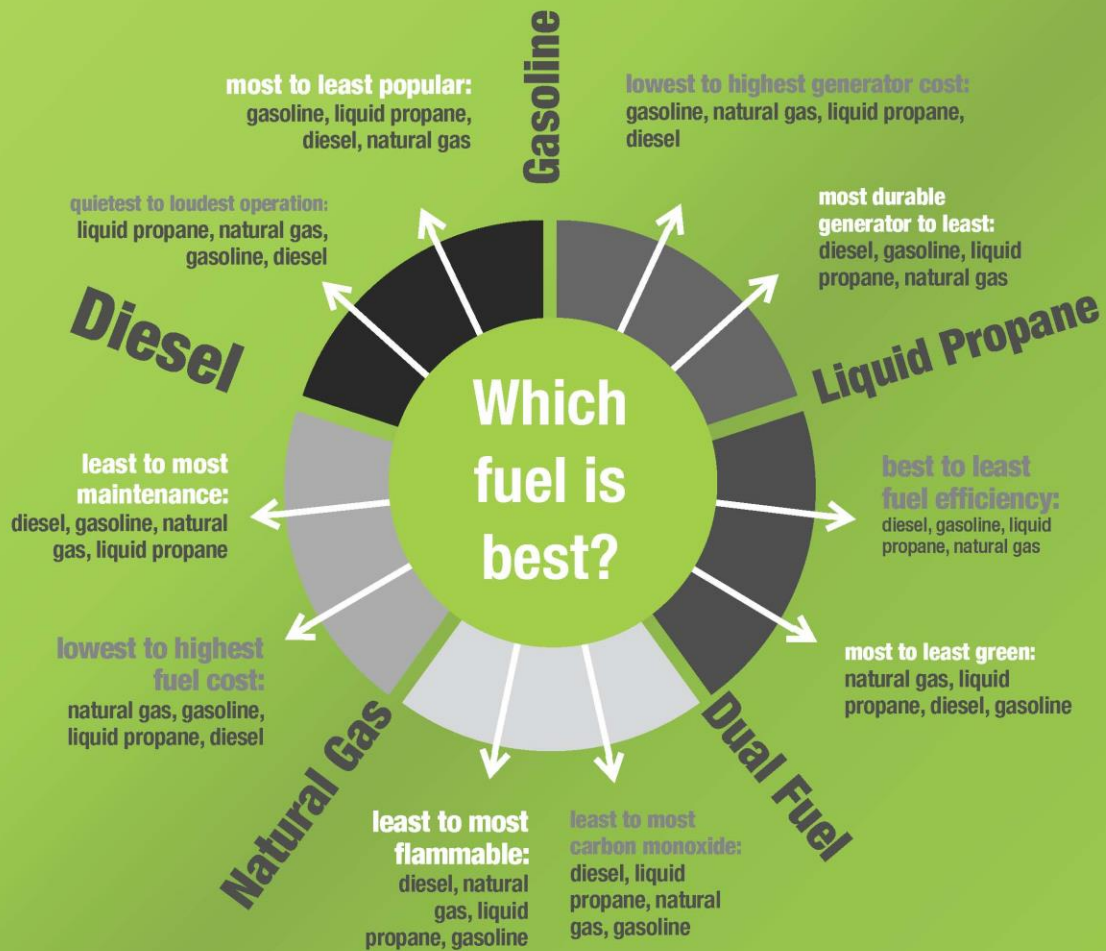
Generators

Presenter: Carl Wahl



**5000W 240V 30A twist lock. Recoil start. 3 year warranty
and free lifetime technical support. \$773 with free shipping
Typical gasoline-powered portable gen-set.**

- Portable Generators - comparing fuel sources



Occidental Area Power Outage Gasoline Availability

Only 4 gas stations of the 9 nearest us can provide gas during power outages:

- 76 Station at Occidental Rd. at Hwy. 116
- 76 Station in Guerneville on Main St. across from Safeway.
- MD Gas. 16430 Main Street, Guerneville.
- 76 Station in Bodega Bay (Hwy. 1 across from Tides restaurant)

The two classes of home generators

A. The portable generator.

Four types of portable generators to consider:

1. Gasoline fueled
2. Dual fueled (gasoline and propane)
3. Inverters
4. Parallel-linked generators (gasoline or dual fueled)

B. The stationary/permanent/standby generator.

There are two types:

1. Methane (natural gas) fueled
2. Propane fueled

C. To determine your basic home power needs, start with these three questions:

1. Do you use city or well water?

Well pumps require a larger 240-volt generator (rated 3800 watts or above).

2. Is your heating system electric, heat pump, or gas forced air?

Gas forced air systems can get by with a very small generator – as little as 2500 watts. The power needed is based on the size of the furnace fan motor. (See below for details.) Electric furnaces and heat pumps typically need 15,000 watts or more to run and cannot be powered by a portable generator.

3. Is your hot water heater electric or gas?

Gas heaters use less power – as little as 2500 watts.

Electric heaters often require at least 4500 watts.

What circuits to power during a long power outage?

This is a matter of personal preference. Consider:

- Refrigerator/freezer
- Receptacle(s) for any powered medical devices
- Microwave oven
- Pump (submersible or jet) for your water storage tank.

If no storage tank, the well pump should probably be powered.

- At least one extra 120V receptacle (for computer, phone recharging, lamps, etc.)
- Electricity to one bathroom
- Optional: Water heater (tankless or similar)